

Pick a Word

Use the word or words in the box that best matches each statement below.

| | |
|-----------------|------------|
| blowout | jack |
| brake fade | lug nuts |
| countersteering | lug wrench |

- _____ 1. A device used to lift and hold a vehicle to change a tire
- _____ 2. A sudden loss of air pressure in a tire
- _____ 3. Loss of brake effectiveness due to overheating
- _____ 4. Steering sharply in the opposite direction
- _____ 5. A device to remove the lug nuts
- _____ 6. Devices used to hold the wheel to the vehicle

Test Your Knowledge

Check correct or incorrect for each situation. If the statement is incorrect, write the word or words that make the statement correct.

Correction

| | Correct | Incorrect | | Correction |
|-----|---------|-----------|---|------------|
| 1. | | | 1. If your brakes overheat, tap the brakes lightly. | _____ |
| 2. | | | 2. Underinflation is a major cause of tire wear. | _____ |
| 3. | | | 3. Handle a rear tire blowout like a skid. | _____ |
| 4. | | | 4. If the accelerator sticks, kick it a few times to try and jar it free. | _____ |
| 5. | | | 5. If the engine overheats, turn on the heater. | _____ |
| 6. | | | 6. If the headlights fail, use turn signals, parking lights, or hazard lights to see. | _____ |
| 7. | | | 7. If there is a fire in the engine, use water to put it out. | _____ |
| 8. | | | 8. If a front wheel leaves the roadway, use targeting and reference points to aid recovery. | _____ |
| 9. | | | 9. If the engine stops suddenly, turn on the headlights. | _____ |
| 10. | | | 10. If you enter a curve too fast, brake hard. | _____ |

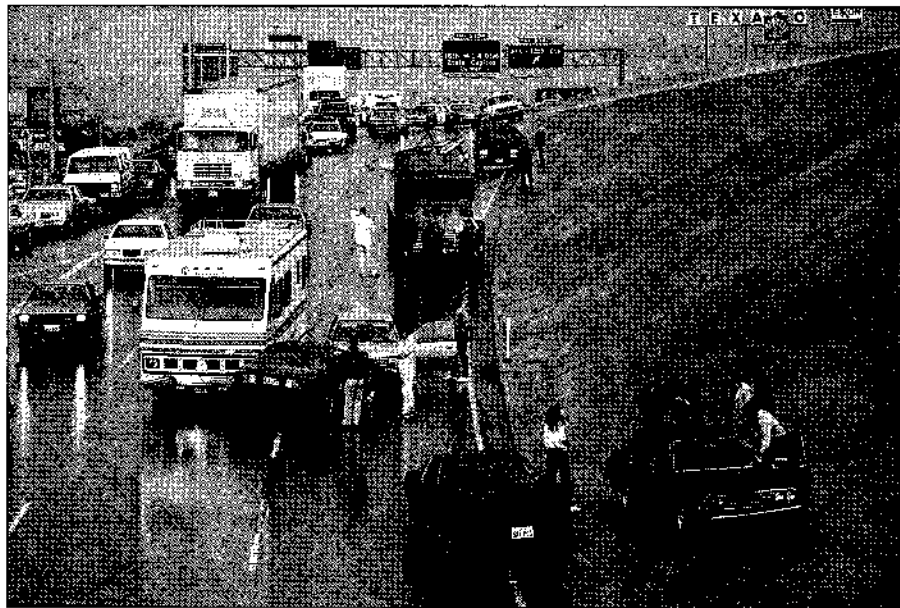
Choose the Action

Write the letter for the action you should execute in the emergency.

| Emergency | Action |
|---|---|
| _____ 1. Head-on collision threat | A. Steer firmly to the right. |
| _____ 2. Large object in the roadway close ahead | B. Push the brake pedal harder. |
| _____ 3. Flooded engine | C. Hold accelerator pedal to the floor, turn ignition on for five seconds. |
| _____ 4. Total steering failure | D. Use the parking brake with on-off action to slow down. |
| _____ 5. Side-impact collision threat | E. Break or accelerate quickly. |
| _____ 6. Total brake failure | F. Downshift to slow. |
| _____ 7. Rear-end collision threat | G. Swerve sharply. |
| _____ 8. A left-front tire blowout occurs | H. Brake hard, steer right. |
| _____ 9. Vehicle stalled on railroad tracks, unable to restart engine | I. Accelerate to gain more space. |
| _____ 10. Power brakes fail | J. All passengers leave the vehicle. |

Number the Steps

In the picture below, a collision has resulted in injury and damage. Number the following steps in the correct order.



- _____ Exchange information with others involved.
- _____ Aid the injured.
- _____ Pull off the roadway and stop.
- _____ Send for the police.
- _____ Prevent further damage.

Answer the Questions

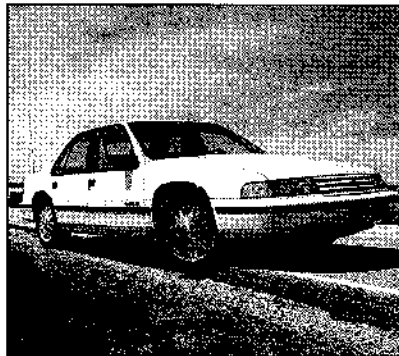
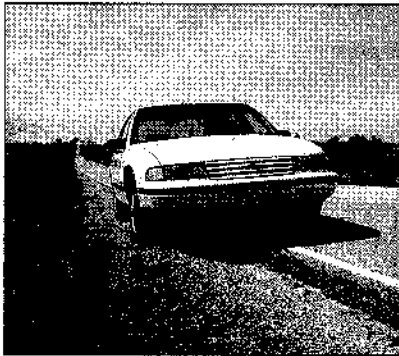
Answer the questions in the blanks below.

1. Name the three items needed to change a flat tire.

2. Write the five steps you take to secure the vehicle before you change a tire.

Use the Pictures

Study the pictures, and then number the steps in the correct order for an off-road recovery.



- _____ Countersteer sharply when the tire touches the roadway.
- _____ Hold the steering wheel on the top half with both hands.
- _____ Check traffic for a safe gap.
- _____ Aim toward the target.
- _____ Reduce speed to 5–10 mph.
- _____ Return to lane position 1.
- _____ Select a safe area to return to the roadway.
- _____ Steer sharply toward the roadway.

© Scott Foreman-Addison Wesley

Test Your Knowledge

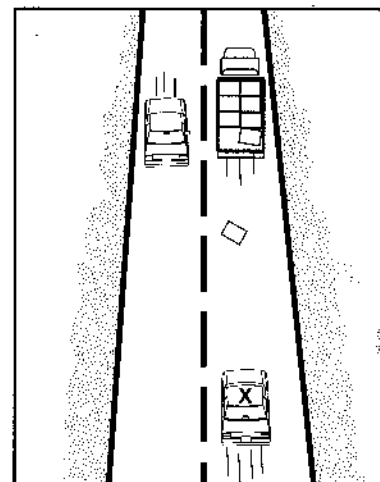
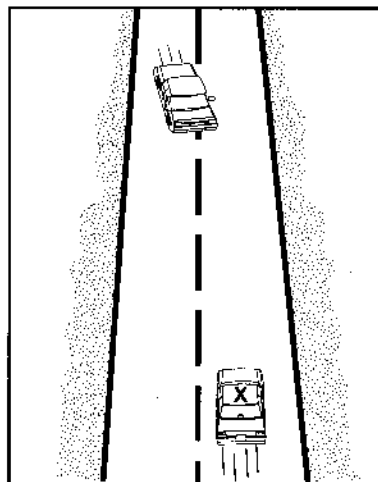
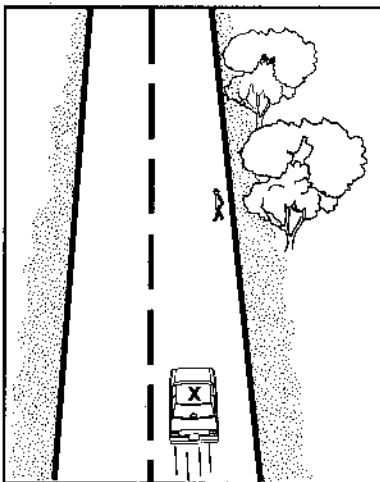
Check true or false for each statement below.

1. Driving is still possible after the accelerator spring breaks.
2. If the hood flies up, look through the crack below the open hood.
3. At speeds over 30 mph, swerving takes more distance than braking.
4. Driving quickly through potholes reduces damage to tires.
5. If a vehicle is totally submerged under water, pressure will equalize allowing doors to be opened.
6. To minimize the effects of a collision, use changes in speed or direction to reduce the impact.
7. If a vehicle crosses over the center line into your path of travel, steer left.
8. Tires wear more quickly when drivers brake abruptly and steer sharply.
9. After a collision, you are not required to show proof of financial responsibility.
10. A "Run Flat" tire can be used for a limited number of miles.

| | Correct | Incorrect |
|-----|---------|-----------|
| 1. | | |
| 2. | | |
| 3. | | |
| 4. | | |
| 5. | | |
| 6. | | |
| 7. | | |
| 8. | | |
| 9. | | |
| 10. | | |

Use the Diagrams

You are the driver of vehicle X in each picture below. Below each picture, write what emergency action or actions you would take.



1. Action: _____

2. Action: _____

3. Action: _____
